

HUNTERS®

HERE TO GET *you* THERE

8 Lakeside Chase, Rawdon, Leeds, LS19 6RL

Offers In The Region Of £160,000

Property Images



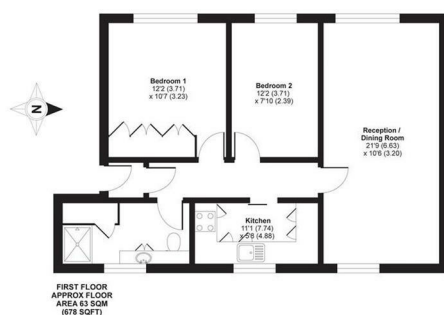
HUNTERS®

HERE TO GET *you* THERE

Property Images



Lakeside Chase, Rawdon, Leeds, LS19



APPROX. GROSS INTERNAL FLOOR AREA 678 SQ FT 63 SQ METRES

Whilst every attempt has been made to ensure the accuracy of the floor plan contained here, measurements of doors, windows and rooms are approximate and no responsibility is taken for any error or omission or misstatement. These plans are for representation purposes only and do not constitute a contract. The actual property may vary from the representation. Any figures given are for information only and should not be relied on as a basis of valuation. Specifically no guarantee is given on the total square footage of the property if quoted on this plan. Any figures given are for information only and should not be relied on as a basis of valuation.


Copyright nchome.co.uk 2019 Produced for Hunters Property Group REF: 532167

HUNTERS[®]

HERE TO GET *you* THERE

Property Images

EPC

Energy Efficiency Rating		
	Current	Potential
Very energy efficient - lower running costs		
(92 plus) A		
(81-91) B		
(69-80) C		
(55-68) D		
(39-54) E		
(21-38) F		
(1-20) G		
Not energy efficient - higher running costs		
	76	81
England & Wales	EU Directive 2002/91/EC 	

Map



Details

Type: Flat Beds: 2 Bathrooms: 1 Receptions: 1 Tenure: Leasehold

Summary

A genuinely spacious and immaculately presented two bedroom first floor apartment in a popular location in Rawdon. With excellent views and a high standard of finish viewing is recommended.

Accommodation briefly consists of an entrance hallway, lounge diner, modern kitchen, modern house bathroom and two double bedrooms. Externally there are communal gardens.

Features

- TWO DOUBLE BEDROOMS • IMMACULATELY PRESENTED • FIRST FLOOR • WELL KEPT COMMUNAL GARDENS • SOUGHT AFTER LOCATION • EPC RATING - C • SPACIOUS APARTMENT